

## Modular Cooking Range Line EVO700 2-Hot Plates Electric Boiling Top Range

ITEM # \_\_\_\_\_

MODEL # \_\_\_\_\_

NAME # \_\_\_\_\_

SIS # \_\_\_\_\_

AIA # \_\_\_\_\_



372014 (Z7ECED2R00)

2-hot plate (2,6 kW each)  
electric boiling top

### Short Form Specification

#### Item No. \_\_\_\_\_

To be installed on open base installations, bridging supports or cantilever systems. Two 2.6 kW cast-iron hot plates hermetically sealed to the one-piece top. Exterior panels in stainless steel with Scotch Brite finish. One piece pressed work top in 1.5 mm thick stainless steel. Right-angled side edges to allow flush-fitting junction between units.

### Main Features

- Unit to be mounted on open base cupboards, bridging supports or cantilever systems.
- The two 2.6kW cast-iron plates are hermetically sealed to the one-piece top.
- The special design of the control knob system guarantees against water infiltration.
- IPx4 water protection.
- Suitable for countertop installation.

### Construction

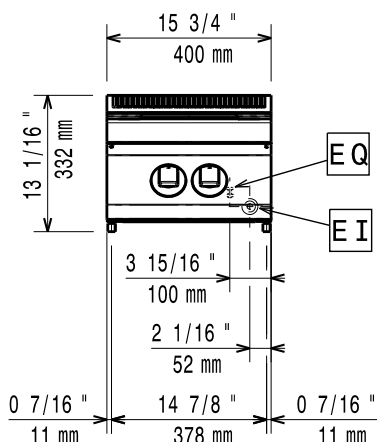
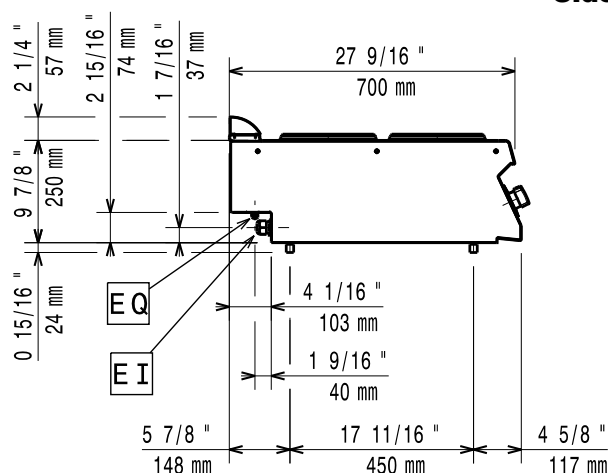
- One piece pressed 1.5 mm work top in Stainless steel.
- Model has right-angled side edges to allow flush fitting joints between units, eliminating gaps and possible dirt traps.
- External panel in Stainless Steel with Scotch Brite finish.

APPROVAL: \_\_\_\_\_

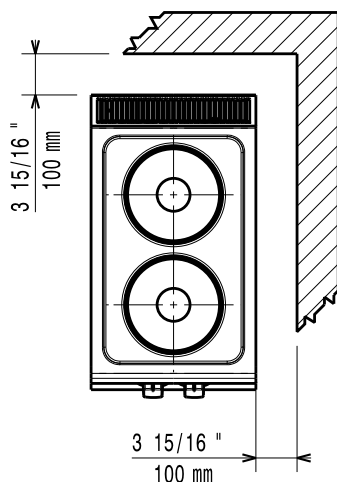
**Optional Accessories**

- |  |            |                          |
|--|------------|--------------------------|
| • Junction sealing kit   | PNC 206086 | <input type="checkbox"/> |
| • Support for bridge type installation, 800 mm                       | PNC 206137 | <input type="checkbox"/> |
| • Support for bridge type installation, 1000 mm                      | PNC 206138 | <input type="checkbox"/> |
| • Support for bridge type installation, 1200 mm                      | PNC 206139 | <input type="checkbox"/> |
| • Support for bridge type installation, 1400 mm                      | PNC 206140 | <input type="checkbox"/> |
| • Support for bridge type installation, 1600 mm                      | PNC 206141 | <input type="checkbox"/> |
| • Support for bridge type installation, 400 mm                       | PNC 206154 | <input type="checkbox"/> |
| • Frontal handrail 400 mm  | PNC 206166 | <input type="checkbox"/> |
| • Frontal handrail 800 mm  | PNC 206167 | <input type="checkbox"/> |
| • Large handrail (portioning shelf) 400 mm                           | PNC 206185 | <input type="checkbox"/> |
| • Large handrail (portioning shelf) 800 mm                           | PNC 206186 | <input type="checkbox"/> |
| • Frontal handrail 1200 mm   | PNC 206191 | <input type="checkbox"/> |
| • Frontal handrail 1600 mm   | PNC 206192 | <input type="checkbox"/> |
| • Right and left side handrails                                      | PNC 206240 | <input type="checkbox"/> |
| • Water column with swivel arm (water column extension not included) | PNC 206289 | <input type="checkbox"/> |
| • Water column extension   | PNC 206291 | <input type="checkbox"/> |
| • Chimney upstand, 400 mm  | PNC 206303 | <input type="checkbox"/> |
| • 2 side covering panels, height 250 mm, depth 700 mm                | PNC 206320 | <input type="checkbox"/> |
| • Chimney grid net, 400mm  | PNC 206400 | <input type="checkbox"/> |

# Modular Cooking Range Line EVO700 2-Hot Plates Electric Boiling Top Range

**Front**

**Side**


EI = Electrical inlet (power)  
 EQ = Equipotential screw

**Top**


## Electric

Supply voltage: 380-400 V/3 ph/50-60 Hz  
 Predisposed for:  
 Total Watts: 5.2 kW

## Key Information:

If appliance is set up or next to or against temperature sensitive furniture or similar, a safety gap of approximately 150 mm should be maintained or some form of heat insulation fitted.

Net weight: 20 kg  
 Shipping weight: 24 kg  
 Shipping height: 530 mm  
 Shipping width: 460 mm  
 Shipping depth: 820 mm  
 Shipping volume: 0.2 m<sup>3</sup>  
 Certification group: EH72T  
 Front Plates Power: 2.6 - 0 kW  
 Back Plates Power: 2.6 - kW  
 Front Plates dimensions: Ø 230  
 Back Plates dimensions: Ø 230